

## ACCOMMODATION

The historic charm of Fern Resort is evident in our tastefully appointed 103 rooms, a combination of inns, cottages and suites. Most have decks or balconies overlooking the lake. All rooms have a fireplace, AC, mini fridge, coffee maker, phone, TV, hair dryer, iron with ironing board. High-speed WiFi is available in all of our rooms.

A limited number of rooms are on the main floor and accessible. Whenever possible we book accommodations close to our clients' meeting space and automatically offer a complimentary upgrade to lake view rooms and cottages.



[See more online](#)

# THE MAIN INN

The Main Inn rooms are conveniently located in the same building as our Heritage Dining Room and Bertyl's Bar. All rooms and suites are located on the second floor of our two storey main building and each has a gas burning fireplace and a wet bar.



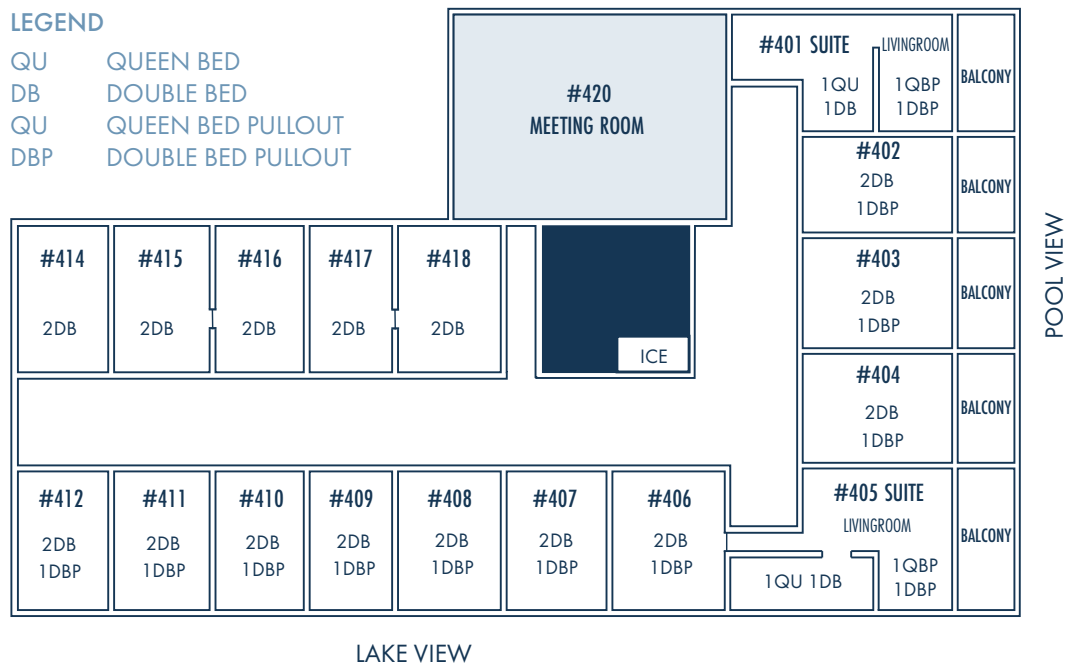
## ROOM TYPES

- Penthouse suites with a balcony (Type 7)
- Penthouse rooms with a balcony (Type 8)
- Lake view rooms (Type 9)
- Land view rooms (Type 10)
- Connecting rooms



### LEGEND

- QU QUEEN BED
- DB DOUBLE BED
- QU QUEEN BED PULLOUT
- DBP DOUBLE BED PULLOUT



---

## MAIN INN - ROOM ASSIGNMENTS

**#401 SUITE** (1 Queen + 1 Double in Bedroom,  
1 Queen Pullout + 1 Double Pullout in Living room)

1. \_\_\_\_\_
2. \_\_\_\_\_

**#402** (2 Doubles/1 Double Pullout)

1. \_\_\_\_\_
2. \_\_\_\_\_

**#403** (2 Doubles/1 Double Pullout)

1. \_\_\_\_\_
2. \_\_\_\_\_

**#404** (2 Doubles/1 Double Pullout)

1. \_\_\_\_\_
2. \_\_\_\_\_

**#405 SUITE** (1 Queen + 1 Double in Bedroom,  
1 Queen Pullout + 1 Double Pullout in Living room)

1. \_\_\_\_\_
2. \_\_\_\_\_

**#406** (2 Doubles/1 Double Pullout)

1. \_\_\_\_\_
2. \_\_\_\_\_

**#407** (2 Doubles/1 Double Pullout)

1. \_\_\_\_\_
2. \_\_\_\_\_

**#408** (2 Doubles/1 Double Pullout)

1. \_\_\_\_\_
2. \_\_\_\_\_

**#409** (2 Doubles/1 Double Pullout)

1. \_\_\_\_\_
2. \_\_\_\_\_

**#410** (2 Doubles/1 Double Pullout)

1. \_\_\_\_\_
2. \_\_\_\_\_

**#411** (2 Doubles/1 Double Pullout)

1. \_\_\_\_\_
2. \_\_\_\_\_

**#412** (2 Doubles/1 Double Pullout)

1. \_\_\_\_\_
2. \_\_\_\_\_

**#414** (2 Doubles)

1. \_\_\_\_\_
2. \_\_\_\_\_

**#415** (2 Doubles)

1. \_\_\_\_\_
2. \_\_\_\_\_

**#416** (2 Doubles)

1. \_\_\_\_\_
2. \_\_\_\_\_

**#417** (2 Doubles)

1. \_\_\_\_\_
2. \_\_\_\_\_

**#418** (2 Doubles)

1. \_\_\_\_\_
2. \_\_\_\_\_

# HEARTHSTONE INN

Situated next to the Main Inn, Hearthstone Inn's rooms offer the option of views over the bay or over our pool deck. All rooms have a wood-burning fireplace.

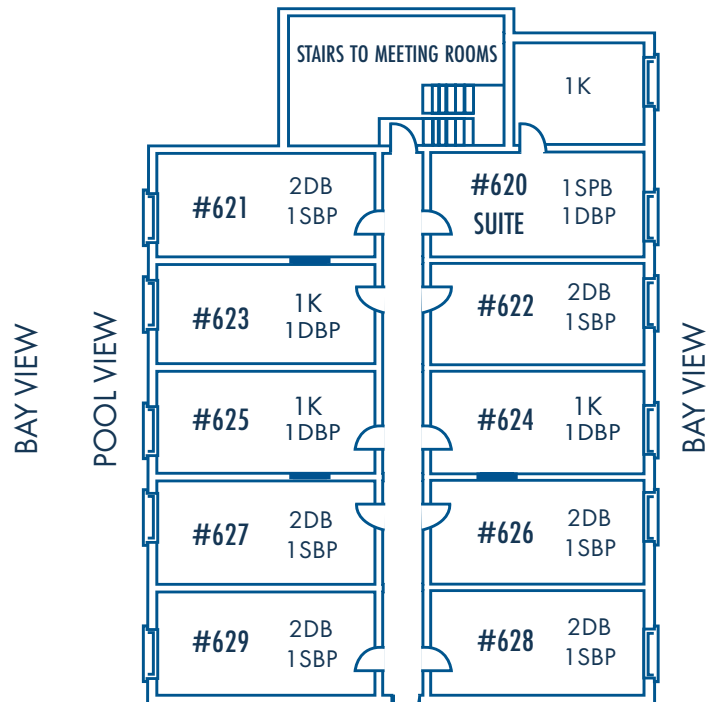
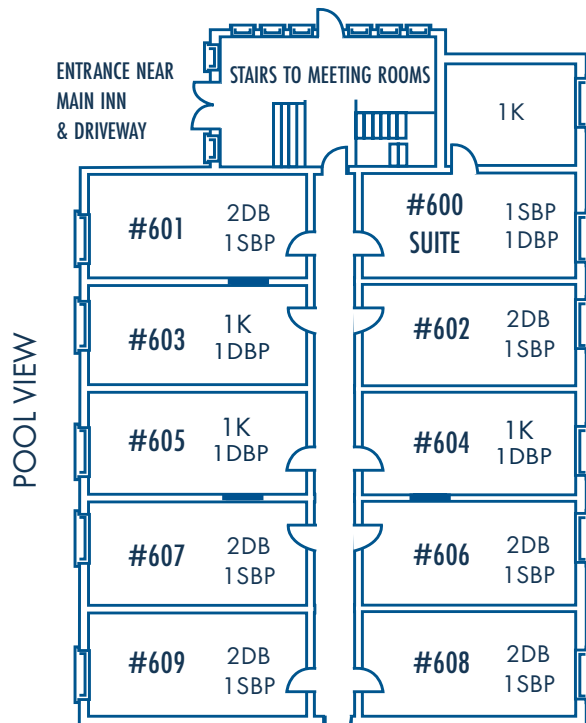


## ROOM TYPES

- Bay view suites (Type 12)
- Bay view rooms (Type 14)
- Pool view rooms (Type 15)
- Connecting Rooms

### LEGEND

K	KING BED
QU	QUEEN BED
DB	DOUBLE BED
SBP	SINGLE BED PULLOUT
DBP	DOUBLE BED PULLOUT



---

## ROOM ASSIGNMENTS - HEARTHSTONE INN

### #600 SUITE

(1 King/1 Double Pullout/1 Single Pullout)

1.

---

### #601 (2 Doubles/1 Single Pullout) Connects to 603

1.

---

2.

---

### #602 (2 Doubles/1 Single Pullout)

1.

---

2.

---

### #603 (1 King /1 Double Pullout) Connects to 601

1.

---

2.

---

### #604 (1 King /1 Double Pullout) Connects to 606

1.

---

2.

---

### #605 (1 King /1 Double Pullout) Connects to 607

1.

---

2.

---

### #606 (2 Doubles/1 Single Pullout) Connects to 604

1.

---

2.

---

### #607 (2 Doubles/1 Single Pullout) Connects to 605

1.

---

2.

---

### #608 (2 Doubles/1 Single Pullout)

1.

---

2.

---

### #609 (2 Doubles/1 Single Pullout)

1.

---

2.

---

### #620 SUITE

(1 King/1 Double Pullout/1 Single Pullout)

1.

---

### #621 (2 Doubles/1 Single Pullout) Connects to 623

1.

---

2.

---

### #622 (2 Doubles/1 Single Pullout)

1.

---

2.

---

### #623 (1 King /1 Double Pullout) Connects to 621

1.

---

2.

---

### #624 (1 King /1 Double Pullout) Connects to 626

1.

---

2.

---

### #625 (1 King /1 Double Pullout) Connects to 627

1.

---

2.

---

### #626 (2 Doubles/1 Single Pullout) Connects to 624

1.

---

2.

---

### #627 (2 Doubles/1 Single Pullout) Connects to 625

1.

---

2.

---

### #628 (2 Doubles/1 Single Pullout)

1.

---

2.

---

### #629 (2 Doubles/1 Single Pullout)

1.

---

2.

---

# FIRESIDE INN

Situated near the Main Inn, Fireside Inn's rooms offer land views or views over the bay. All rooms have a wood-burning fireplace and a balcony.



## ROOM TYPES

- Lake view suites (Type 11)
- Lake view rooms (Type 13)
- Land view rooms with Queen (Type 17)
- Land view rooms with Queen and Double (Type 18)
- Connecting rooms
- \* Accessible rooms

### LEGEND

K	KING BED
QU	QUEEN BED
S	SINGLE BED
DB	DOUBLE BED
DBP	DOUBLE BED PULLOUT
SBP	SINGLE BED PULLOUT

### LAKE VIEW

1K	#106 SUITE 2SBP	#104 1K 1DBP	MEETING RM 110	MEETING RM 108	#102 SUITE 2SBP	1K		
ENTRANCE NEAR BAYSHORE						ENTRANCE NEAR OFFICE		
#119 1QU 1DB 1SBP	#117 1QU 1DB 1SBP	#115 1QU 1DB 1SBP	#111 1QU 1DB 1SBP	#109 1QU 1DB 1SBP	#107 1QU 1DB 1SBP	#105 1QU 1DB 1SBP	#103* 1QU 1SBP	#101* 1QU 1S

### GROUND FLOOR

### LAND VIEW

### LAKE VIEW

1K	#214 SUITE 2SBP	#212 1K 1DBP	#210 1K 1DBP	#208 1K 1DBP	#206 1K 1DBP	#204 1K 1DBP	#202 SUITE 2SBP	1K
#219 1QU 1DB 1SBP	#217 1QU 1DB 1SBP	#215 1QU 1DB 1SBP	#211 1QU 1DB 1SBP	#209 1QU 1DB 1SBP	#207 1QU 1DB 1SBP	#205 1QU 1DB 1SBP	#203 1QU 1DB 1SBP	#201 1QU 1DB 1SBP

### SECOND FLOOR

### LAND VIEW

# FIRESIDE INN - ROOM ASSIGNMENTS

**#101** (Wheelchair accessible, roll-in shower, roll-under sink – 1 Queen/1 Single)

1. \_\_\_\_\_
2. \_\_\_\_\_

**#102 SUITE** (1 King/2 Single Pullout)

1. \_\_\_\_\_
2. \_\_\_\_\_

**#103** (Wheelchair accessible, roll-in shower, roll-under sink – 1 Queen/1 Single Pullout)

1. \_\_\_\_\_
2. \_\_\_\_\_

**#104** (1 King/1 Double Pullout)

1. \_\_\_\_\_
2. \_\_\_\_\_

**#105** (1 Queen/1 Double/1 Single Pullout)

1. \_\_\_\_\_
2. \_\_\_\_\_

**#106 SUITE** (1 King/2 Single Pullout)

1. \_\_\_\_\_
2. \_\_\_\_\_

**#107** (1 Queen/1 Double/1 Single Pullout)

1. \_\_\_\_\_
2. \_\_\_\_\_

**#109** (1 Queen/1 Double/1 Single Pullout)

1. \_\_\_\_\_
2. \_\_\_\_\_

**#111** (1 Queen/1 Double/1 Single Pullout)

1. \_\_\_\_\_
2. \_\_\_\_\_

**#115** (1 Queen/1 Double/1 Single Pullout)

1. \_\_\_\_\_
2. \_\_\_\_\_

**#117** (1 Queen/1 Double/1 Single Pullout)

1. \_\_\_\_\_
2. \_\_\_\_\_

**#119** (1 Queen/1 Double/1 Single Pullout)

1. \_\_\_\_\_
2. \_\_\_\_\_



---

## FIRESIDE INN - ROOM ASSIGNMENTS

**#201** (1 Queen/1 Double/1 Single Pullout)

1. \_\_\_\_\_
2. \_\_\_\_\_

**#202 SUITE** (1 King/2 Single Pullout)

1. \_\_\_\_\_
2. \_\_\_\_\_

**#203** (1 Queen/1 Double/1 Single Pullout)

1. \_\_\_\_\_
2. \_\_\_\_\_

**#204** (1 King/1 Double Pullout)

1. \_\_\_\_\_
2. \_\_\_\_\_

**#205** (1 Queen/1 Double/1 Single Pullout)

1. \_\_\_\_\_
2. \_\_\_\_\_

**#206** (1 King/1 Double Pullout)

1. \_\_\_\_\_
2. \_\_\_\_\_

**#207** (1 Queen/1 Double/1 Single Pullout)

1. \_\_\_\_\_
2. \_\_\_\_\_

**#208** (1 King/1 Double Pullout)

1. \_\_\_\_\_
2. \_\_\_\_\_

**#209** (1 Queen/1 Double/1 Single Pullout)

1. \_\_\_\_\_
2. \_\_\_\_\_

**#210** (1 King /1 Double Pullout)

1. \_\_\_\_\_
2. \_\_\_\_\_

**#211** (1 Queen/1 Double/1 Single Pullout)

1. \_\_\_\_\_
2. \_\_\_\_\_

**#212** (1 King/1 Double Pullout)

1. \_\_\_\_\_
2. \_\_\_\_\_

**#214 SUITE** (1 King/2 Single Pullouts)

1. \_\_\_\_\_

**#215** (1 Queen/1 Double/1 Single Pullout)

1. \_\_\_\_\_
2. \_\_\_\_\_

**#217** (1 Queen/1 Double/1 Single Pullout)

1. \_\_\_\_\_
2. \_\_\_\_\_

**#219** (1 Queen/1 Double/1 Single Pullout)

1. \_\_\_\_\_
2. \_\_\_\_\_



# FERNWOOD INN

Two storey Inn with 1-room jet tub rooms overlooking the lake. Each unit has a private balcony and wood-burning fireplace.



## ROOM TYPES

- 1 room, jet tub, lake view (Type 16)

## ROOM ASSIGNMENTS

### Ground Floor

**#321** 1 Queen/1 Double Pullout  
1.

---

**#322** 1 Queen/1 Double Pullout  
1.

---

**#323** 1 Queen/1 Double Pullout  
1.

---

### Second Floor

**#324** 1 Queen/1 Double Pullout  
1.

---

**#325** 1 Queen/1 Double Pullout  
1.

---

**#326** 1 Queen/1 Double Pullout  
1.

---





## EDGEWATER COTTAGES

Semi-detached, cozy lakeside cottages located just 15 feet from the lakeshore. All of these cottages have a wood-burning fireplace, walk-in shower or tub and walkout to a deck with a view of the lake.



## ROOM TYPES

- Edgewater lake view (Type 2)



---

## EDGEWATER COTTAGES - ROOM ASSIGNMENTS

**#301** 2 Doubles/1 Single Pullout/Shower

1.

---

2.

---

**#302** 2 Doubles/1 Single Pullout/Shower

1.

---

2.

---

**#303** 2 Doubles/1 Single Pullout/Shower

1.

---

2.

---

**#304** 2 Doubles/1 Single Pullout/Shower

1.

---

2.

---

**#305** 2 Doubles/1 Single Pullout/Shower

1.

---

2.

---

**#306** 2 Doubles/1 Single Pullout/Shower

1.

---

2.

---

**#307** 2 Doubles/1 Single Pullout/Shower

1.

---

2.

---

**#308** 2 Doubles/1 Single Pullout/Shower

1.

---

2.

---

**#309** 2 Doubles/1 Single Pullout/Shower

1.

---

2.

---

**#310** 2 Doubles/1 Single Pullout/Shower

1.

---

2.

---

**#311** 2 Doubles/1 Single Pullout/Shower

1.

---

2.

---

**#312** (2 Doubles/1 Single Pullout/Shower

1.

---

2.

---

**#314** 2 Doubles/1 Single Pullout/Tub

1.

---

2.

---

**#315** 2 Doubles/1 Single Pullout/Tub

1.

---

2.

---

**#316** (2 Doubles/1 Single Pullout/Tub

1.

---

2.

---

**#317** 2 Doubles/1 Single Pullout/Tub

1.

---

2.

---

# BAYSHORE COTTAGES

Semi-detached, two-room lakeside cottages offering a bedroom and bedsitting room. All of these cottages have a wood-burning fireplace and a private deck overlooking the bay.



## ROOM TYPES

- 2-room lakeview cottages (Type 3, 4 & 5)
- 2-room loft-style cottages (Type 6)



---

## BAYSHORE COTTAGES - ROOM ASSIGNMENTS

**#331** (2 Queen/1 Single Pullout)

1. \_\_\_\_\_
2. \_\_\_\_\_

**#332** (2 Queen/1 Single Pullout)

1. \_\_\_\_\_
2. \_\_\_\_\_

**#333** (2 Queen/1 Single Pullout)

1. \_\_\_\_\_
2. \_\_\_\_\_

**#334** (2 Queen/1 Single Pullout)

1. \_\_\_\_\_
2. \_\_\_\_\_

**#335** (2 Queen/1 Single Pullout)

1. \_\_\_\_\_
2. \_\_\_\_\_

**#336** (2 Queen/1 Single Pullout)

1. \_\_\_\_\_
2. \_\_\_\_\_

**#337\*** (1 Queen in Livingroom /1Double/2 Singles/1 Single Pullout)

1. \_\_\_\_\_
2. \_\_\_\_\_
3. \_\_\_\_\_
4. \_\_\_\_\_

**#338\*** (1 Queen in Livingroom/ 1 Double/ 2 Singles/1 Single Pullout)

1. \_\_\_\_\_
2. \_\_\_\_\_
3. \_\_\_\_\_
4. \_\_\_\_\_

**#339** (2 Doubles/1 Queen/1 Single Pullout)

1. \_\_\_\_\_
2. \_\_\_\_\_
3. \_\_\_\_\_

**#340** (2 Doubles/1 Queen/1 Single Pullout)

1. \_\_\_\_\_
2. \_\_\_\_\_
3. \_\_\_\_\_

**#341** (Open loft with 1 Queen/1 Queen/2 Single Pullout)

1. \_\_\_\_\_
2. \_\_\_\_\_

**#342** (Open loft with 1 Queen/1 Double - Murphy bed/2 Single Pullout)

1. \_\_\_\_\_
2. \_\_\_\_\_

\* 337 & 338 have doors on the bedroom and the living room.



## SWEET FERN COTTAGE

2-storey lakeside cottage just 15 feet from the lakeshore with its own fireplace, sunken living room and private deck. Located next to outdoor pools and beach.

### ROOM TYPE

- 3-room lakeview cottage (Type 1)

### ROOM ASSIGNMENTS

**#300** 1 Queen/2 Doubles/1 Double Pullout

1. \_\_\_\_\_

2. \_\_\_\_\_

3. \_\_\_\_\_





## TWIN FERN COTTAGES

Semi-detached 2-storey lakeside cottages with 2 bedrooms just 15 feet from the lakeshore with wood-burning fireplace and private deck.



## ROOM TYPE

- 3-room lakeview cottage (Type 19)



## ROOM ASSIGNMENTS

**#318** (1 Queen/2 Doubles/1 Single Pullout)

1. \_\_\_\_\_
2. \_\_\_\_\_
3. \_\_\_\_\_

**#319** (1 Queen/2 Doubles/1 Single Pullout)

1. \_\_\_\_\_
2. \_\_\_\_\_
3. \_\_\_\_\_

---

# EVERGREEN VILLA

Located in the centre of the Resort with a land view and close to the Main Inn, Evergreen Villa is a charming 2-storey accommodation, the Fitness Centre, the Indoor Pool and the owner's private residence. The Villa has a master bedroom with ensuite bathroom, a large open concept kitchen, dining and living room area and a powder room and laundry room on the main floor. Two more bedrooms with a shared bathroom are located upstairs. Though the kitchen is not available for cooking, it has a table that can seat 10 people and can be used as a meeting space.







Main Floor Bedroom

## ROOM ASSIGNMENTS - EVERGREEN VILLA

**#350 Bedroom 1 - Main Floor (1 King/1 Double Pullout) - 3 Piece Ensuite Bathroom**

1.

---

**#350 Bedroom 2 - Second Floor (1 Queen/1 Double)**

1.

---

2.

---

**#350 Bedroom 3 (Bedroom by washroom) - Second Floor (2 Doubles)**

1.

---

2.

---



Bedroom 2



Bedroom 3

# HOW TO GET HERE



## **Fern Resort**

4432 Fern Resort Road  
Ramara, ON L3V 0Z1  
1.888.725.2256  
705.325.2256

## **Jennifer Demuth**

*Sales Manager*  
sales@fernresort.com

We are a short drive from the GTA, and only 30 minutes from Barrie, ON. From Orillia, take Hwy 12 east and turn north on Rama Road (County Rd. 44). Turn West on Fern Resort Road.

## SAVE TIME AND FLY

We are a 20 minute drive from Lake Simcoe Regional Airport which is serviced by multiple airlines. The short-hop flight from downtown Toronto takes less than 20 minutes. Domestic and international charters can also be booked from most major cities at a reasonable price. Canada Customs Agents are onsite for international arrivals and rental cars and taxis are available. For guests flying into Pearson International Airport in Toronto, Simcoe County Airport Service runs a shuttle service directly to Fern Resort.



See more online